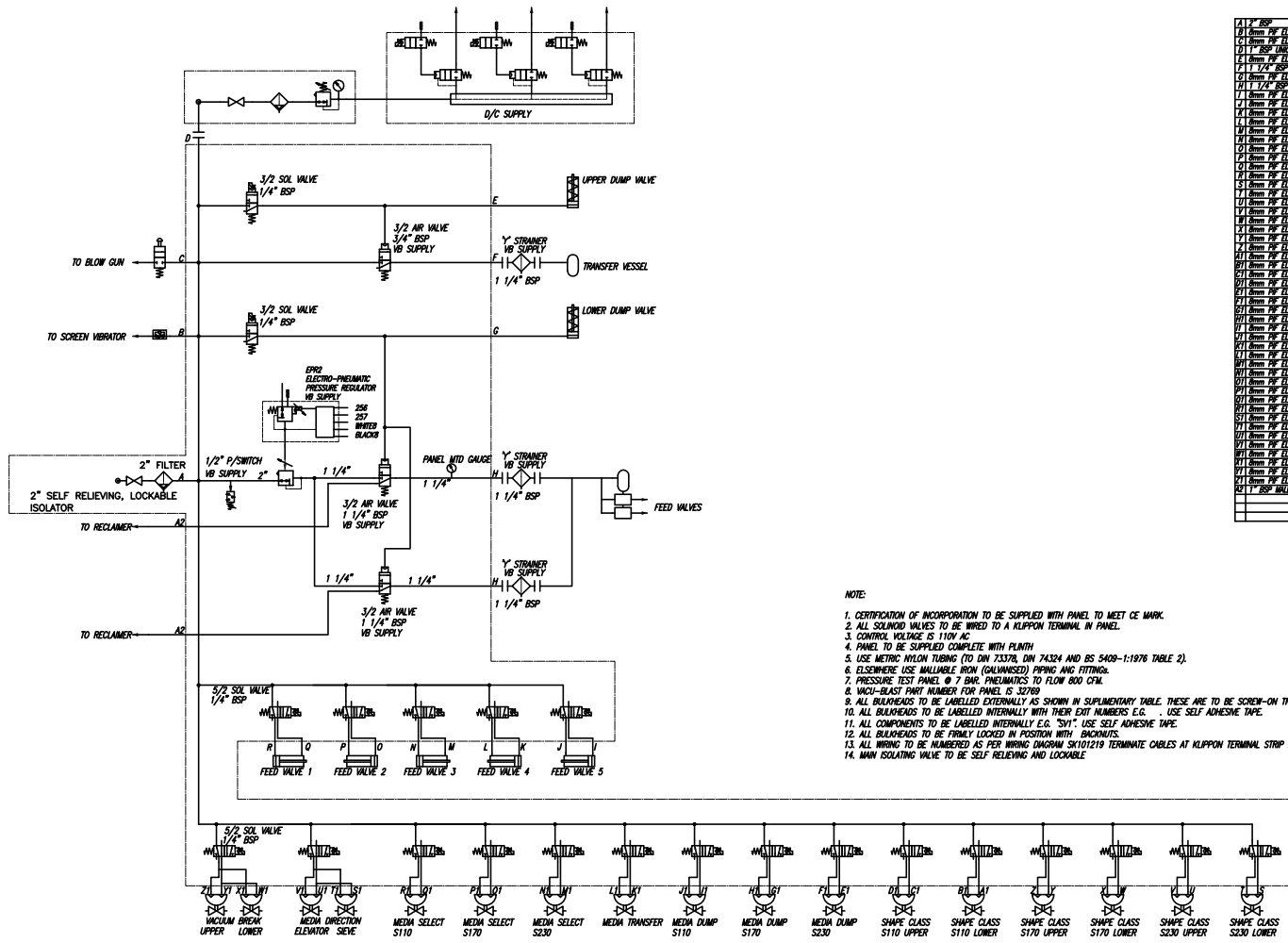




IF IN DOUBT ASK

THIRD ANGLE PROJECTION



A17	BSP	1/4" SIDE BOTTOM
A18	BSP	1/4" SIDE TOP
A19	BSP	1/4" SIDE TOP
A20	BSP	1/4" SIDE TOP
A21	BSP	1/4" SIDE TOP
A22	BSP	1/4" SIDE TOP
A23	BSP	1/4" SIDE TOP
A24	BSP	1/4" SIDE TOP
A25	BSP	1/4" SIDE TOP
A26	BSP	1/4" SIDE TOP
A27	BSP	1/4" SIDE TOP
A28	BSP	1/4" SIDE TOP
A29	BSP	1/4" SIDE TOP
A30	BSP	1/4" SIDE TOP
A31	BSP	1/4" SIDE TOP
A32	BSP	1/4" SIDE TOP
A33	BSP	1/4" SIDE TOP
A34	BSP	1/4" SIDE TOP
A35	BSP	1/4" SIDE TOP
A36	BSP	1/4" SIDE TOP
A37	BSP	1/4" SIDE TOP
A38	BSP	1/4" SIDE TOP
A39	BSP	1/4" SIDE TOP
A40	BSP	1/4" SIDE TOP
A41	BSP	1/4" SIDE TOP
A42	BSP	1/4" SIDE TOP
A43	BSP	1/4" SIDE TOP
A44	BSP	1/4" SIDE TOP
A45	BSP	1/4" SIDE TOP
A46	BSP	1/4" SIDE TOP
A47	BSP	1/4" SIDE TOP
A48	BSP	1/4" SIDE TOP
A49	BSP	1/4" SIDE TOP
A50	BSP	1/4" SIDE TOP
A51	BSP	1/4" SIDE TOP
A52	BSP	1/4" SIDE TOP
A53	BSP	1/4" SIDE TOP
A54	BSP	1/4" SIDE TOP
A55	BSP	1/4" SIDE TOP
A56	BSP	1/4" SIDE TOP
A57	BSP	1/4" SIDE TOP
A58	BSP	1/4" SIDE TOP
A59	BSP	1/4" SIDE TOP
A60	BSP	1/4" SIDE TOP
A61	BSP	1/4" SIDE TOP
A62	BSP	1/4" SIDE TOP
A63	BSP	1/4" SIDE TOP
A64	BSP	1/4" SIDE TOP
A65	BSP	1/4" SIDE TOP
A66	BSP	1/4" SIDE TOP
A67	BSP	1/4" SIDE TOP
A68	BSP	1/4" SIDE TOP
A69	BSP	1/4" SIDE TOP
A70	BSP	1/4" SIDE TOP
A71	BSP	1/4" SIDE TOP
A72	BSP	1/4" SIDE TOP
A73	BSP	1/4" SIDE TOP
A74	BSP	1/4" SIDE TOP
A75	BSP	1/4" SIDE TOP
A76	BSP	1/4" SIDE TOP
A77	BSP	1/4" SIDE TOP
A78	BSP	1/4" SIDE TOP
A79	BSP	1/4" SIDE TOP
A80	BSP	1/4" SIDE TOP
A81	BSP	1/4" SIDE TOP
A82	BSP	1/4" SIDE TOP
A83	BSP	1/4" SIDE TOP
A84	BSP	1/4" SIDE TOP
A85	BSP	1/4" SIDE TOP
A86	BSP	1/4" SIDE TOP
A87	BSP	1/4" SIDE TOP
A88	BSP	1/4" SIDE TOP
A89	BSP	1/4" SIDE TOP
A90	BSP	1/4" SIDE TOP
A91	BSP	1/4" SIDE TOP
A92	BSP	1/4" SIDE TOP
A93	BSP	1/4" SIDE TOP
A94	BSP	1/4" SIDE TOP
A95	BSP	1/4" SIDE TOP
A96	BSP	1/4" SIDE TOP
A97	BSP	1/4" SIDE TOP
A98	BSP	1/4" SIDE TOP
A99	BSP	1/4" SIDE TOP
A100	BSP	1/4" SIDE TOP

- NOTE:
- CERTIFICATION OF INCORPORATION TO BE SUPPLIED WITH PANEL TO MEET CE MARK.
 - ALL SOLINOID VALVES TO BE WIRED TO A KLIPFON TERMINAL IN PANEL.
 - CONTROL VOLTAGE IS 110V AC.
 - PANEL TO BE SUPPLIED COMPLETE WITH PLUMB.
 - USE METRIC NYLON TUBING (TO DIM 23326, DIM 24324 AND BS 5409-1:1976 TABLE 2).
 - ELSEWHERE USE MALLEABLE IRON (GALVANISED) PIPING AND FITTINGS.
 - PRESSURE TEST PANEL @ 7 BAR. PNEUMATICS TO FLOW 800 CFM.
 - WICH-BLAST PART NUMBER FOR PANEL IS 32789.
 - ALL BULKHEADS TO BE LABELLED EXTERNALLY AS SHOWN IN SUPPLEMENTARY TABLE. THESE ARE TO BE SCREW-ON TRAFOLYTE TYPE. TO ALL BULKHEADS TO BE LABELLED INTERNALLY WITH THEIR EXT NUMBERS E.G. "S11". USE SELF ADHESIVE TAPE.
 - ALL COMPONENTS TO BE LABELLED INTERNALLY E.G. "S11". USE SELF ADHESIVE TAPE.
 - ALL BULKHEADS TO BE FIRMLY LOCKED IN POSITION WITH BUSHKETS.
 - ALL WIRING TO BE NUMBERED AS PER WIRING DIAGRAM SK101219. TERMINATE CABLES AT KLIPFON TERMINAL STRIP IN ENCLOSURE.
 - MAN ISOLATING VALVE TO BE SELF RELIEVING AND LOCKABLE.

REMOVE ALL BURRS AND SHARP EDGES

USF Surface Preparation Ltd. This drawing is the property of USF Surface Preparation Ltd. It is to be used for the purpose specified and no other use without the written consent of USF Surface Preparation Ltd. All rights reserved. No part of this drawing may be reproduced without the written consent of USF Surface Preparation Ltd.

REV	DESCRIPTION	DATE	BY	CHECKED	DATE
1	ISSUE	20/02/02	CHICKENBANK		
2	ISSUE	20/02/02	CHICKENBANK		
3	ISSUE	20/02/02	CHICKENBANK		
4	ISSUE	20/02/02	CHICKENBANK		
5	ISSUE	20/02/02	CHICKENBANK		
6	ISSUE	20/02/02	CHICKENBANK		
7	ISSUE	20/02/02	CHICKENBANK		
8	ISSUE	20/02/02	CHICKENBANK		
9	ISSUE	20/02/02	CHICKENBANK		
10	ISSUE	20/02/02	CHICKENBANK		
11	ISSUE	20/02/02	CHICKENBANK		
12	ISSUE	20/02/02	CHICKENBANK		
13	ISSUE	20/02/02	CHICKENBANK		

USF Surface Preparation Ltd. Air Avenue, Bury, Greater Manchester, M9 9WU. Tel: 0161 254 2200. Fax: 0161 254 2201. Email: sales@usf.co.uk

Matching Symbols: Shape Cut, Dimension Marking, Ground Marking

Scale: 1:1

Proj: PNEUMATIC DIAGRAM

Sheet: A0 of 1

Rev: SK10218

Drawn: JPP

Checked: JPP

Used on: 13